

SUBLEASE - 50 S. STEELE SUITE 500



BUELL



50 S. Steele Street, Suite 500, Denver, Colorado 80209

ROCHE FORE | DAVID FOLEY (303) 320-6929 or roche@buellco.com
BUELL & COMPANY | 50 South Steele Street, Suite 1000 | Denver, Colorado | 80209



Premium location in Cherry Creek North

- PROPERTY ADDRESS: 50 S. Steele Street, Denver, CO 80206
- PROPERTY TYPES: Office, Sublease
- SUITE/SIZE: Suite 500 - 2,655 RSF 5th Floor
- RENT: \$28.00 PSF Full Service
- LEASE TERM: Remaining Term to January 31, 2021
- Private off street parking available for Employees.
- Responsive, Local Management.

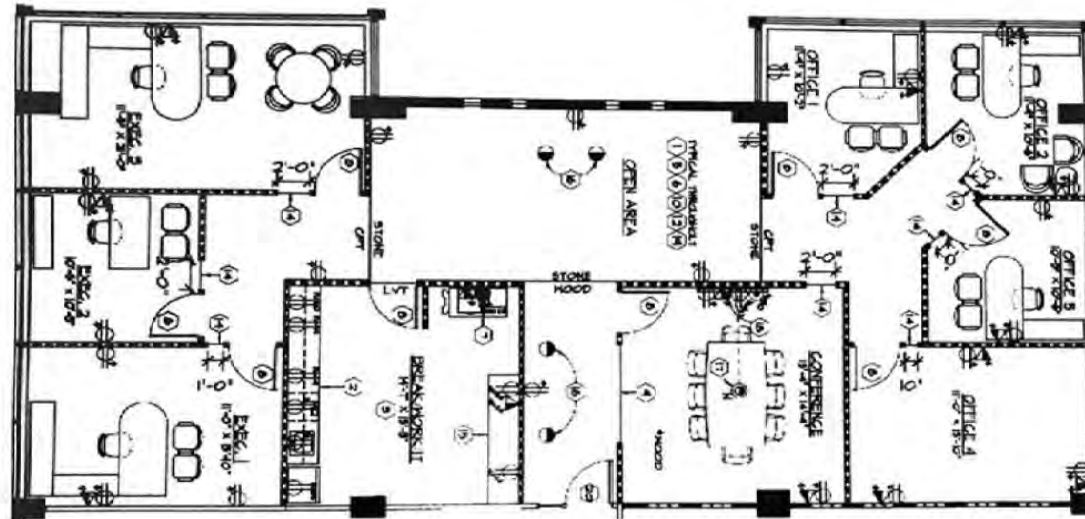
50 S. Steele Street, Suite 500, Denver, Colorado 80209

FLOOR PLAN



BUELL

Suite 500 - Approximately 2,655 RSF, 5th Floor



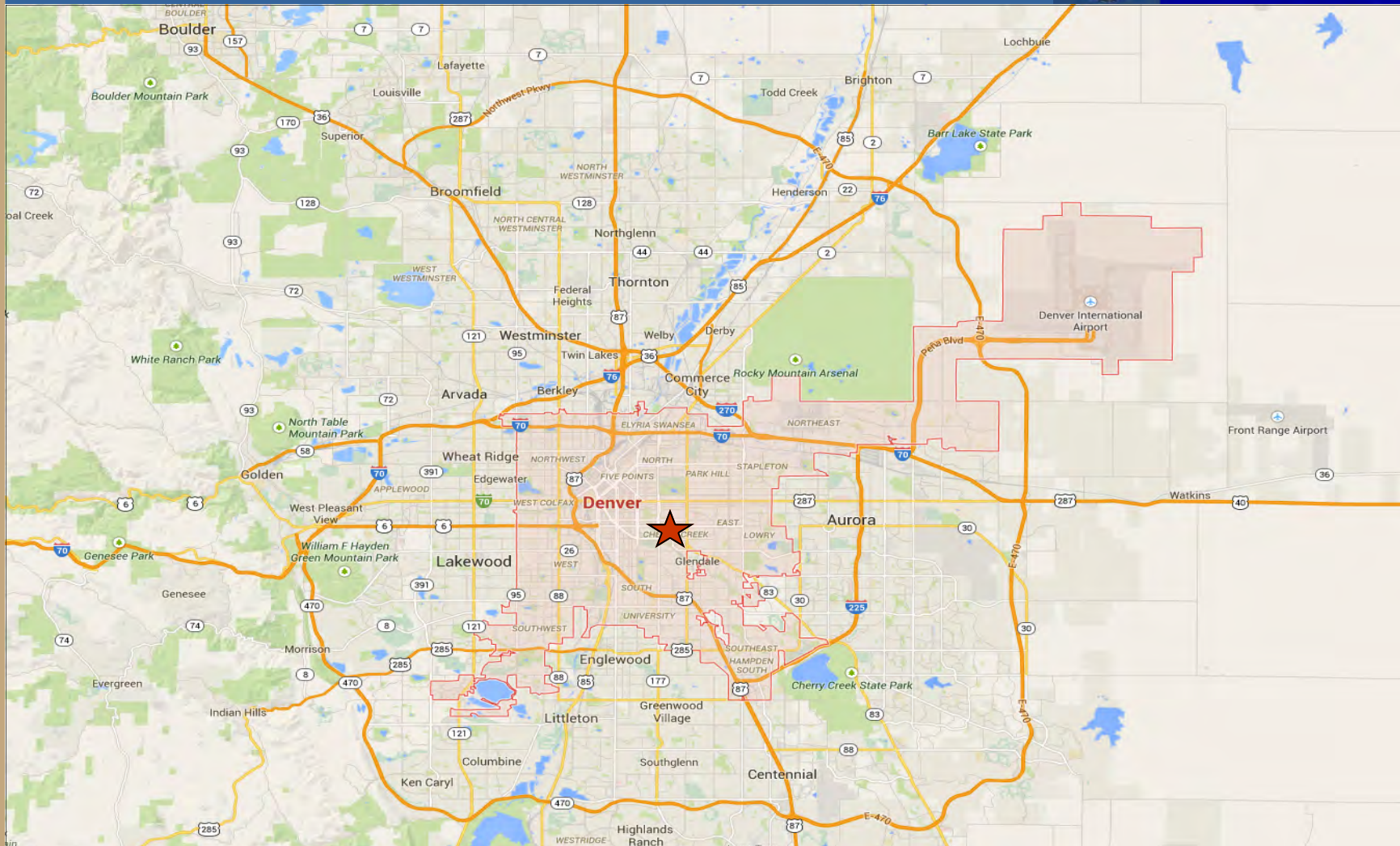
50 S. Steele Street, Suite 500, Denver, Colorado 80209

ROCHE FORE | DAVID FOLEY (303) 320-6929 or roche@buellco.com
BUELL & COMPANY | 50 South Steele Street, Suite 1000 | Denver, Colorado | 80209

DENVER METRO LOCATION MAP



BUELL



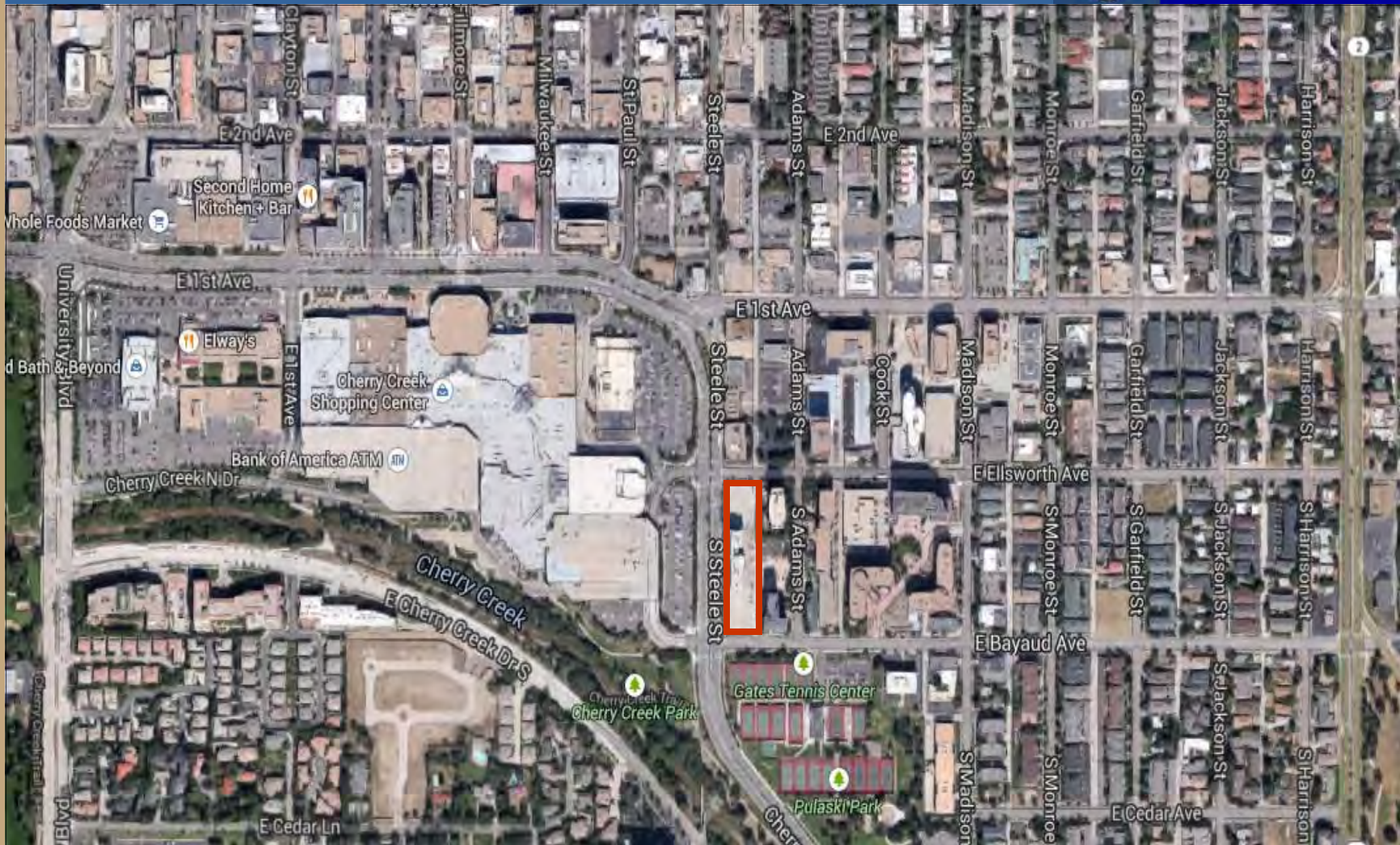
50 S. Steele Street, Suite 500, Denver, Colorado 80209

ROCHE FORE | DAVID FOLEY (303) 320-6929 or roche@buellco.com
BUELL & COMPANY | 50 South Steele Street, Suite 1000 | Denver, Colorado | 80209

AERIAL SITE MAP



BUELL



50 S. Steele Street, Suite 500, Denver, Colorado 80209

ROCHE FORE | DAVID FOLEY (303) 320-6929 or roche@buellco.com
BUELL & COMPANY | 50 South Steele Street, Suite 1000 | Denver, Colorado | 80209